

# Naracoorte Primary School Traffic Safety

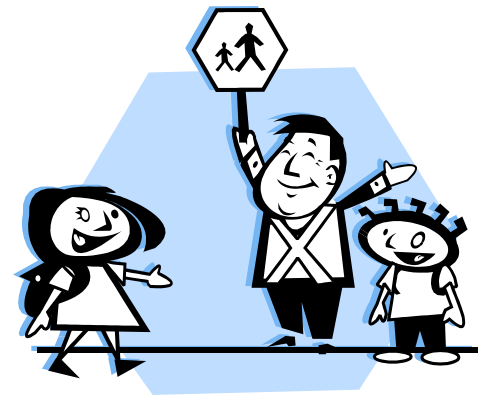


Updated 2011

We are **very concerned** about the **danger to children from cars** passing the school. Unfortunately the greatest danger is **often** from parents picking up and dropping off their children.

Please observe the following:

- The **speed limit** past the school is **25kph** ANYTIME there are children present on the footpaths
- Please note the position of the SCHOOL SIGN in Park Terrace and Moore Street. The **school zone**, where the limit applies, consists of the whole distance between the signs and the white zigzag lines
- Pick up and deliver your children in **MOORE Street**, away from the main bus traffic area
- We encourage you NOT to use PARK TERRACE or the DIRT TRACK to drop off and pick up children
- Please **DO NOT use the STAFF CARPARK to drop off and pick up** UNLESS there are **exceptional circumstances** – e.g. medical /illness/emergency etc
- We encourage you and your children to **use pedestrian pathways** and **gates**
- Traffic is usually particularly heavy between 8:30am & 9:00am and again 3:25 to 3:45pm
- Your child needs to **know the road rules**



## OTHER INFORMATION

Bike racks are provided for students who ride bikes to school. **Students are expected to obey road rules, including helmet requirements.**

Class teachers decide where **scooters and skateboards** are kept during school hours.

**Bikes, skateboards & scooters are NOT to be ridden in the school grounds. Repeated incidents of this will result in the student being managed via the school behaviour policy.**

## ROAD SAFETY COMMITTEE

A **road safety committee** exists to discuss and respond to road safety issues. All parents are encouraged to join this committee.

